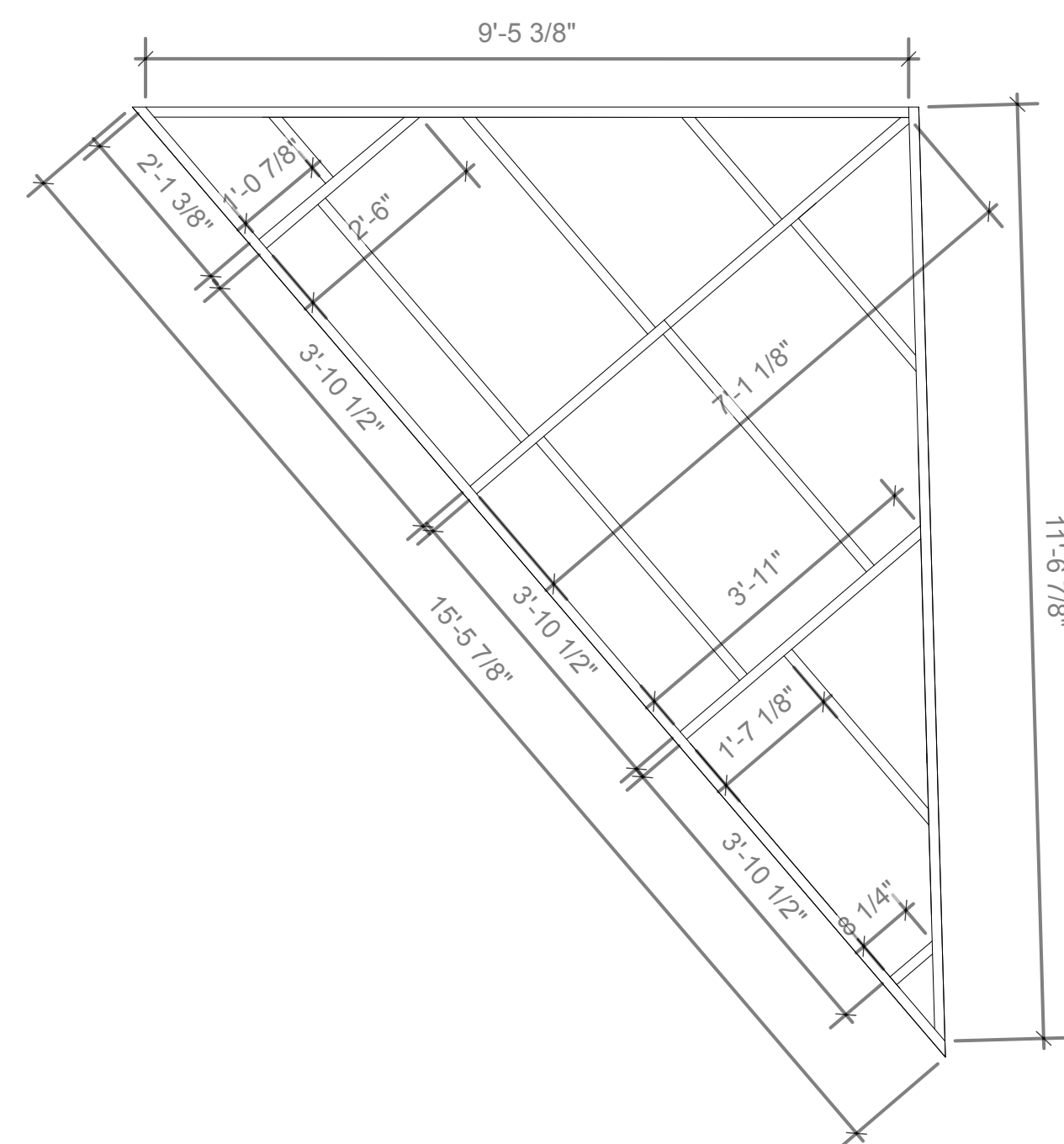
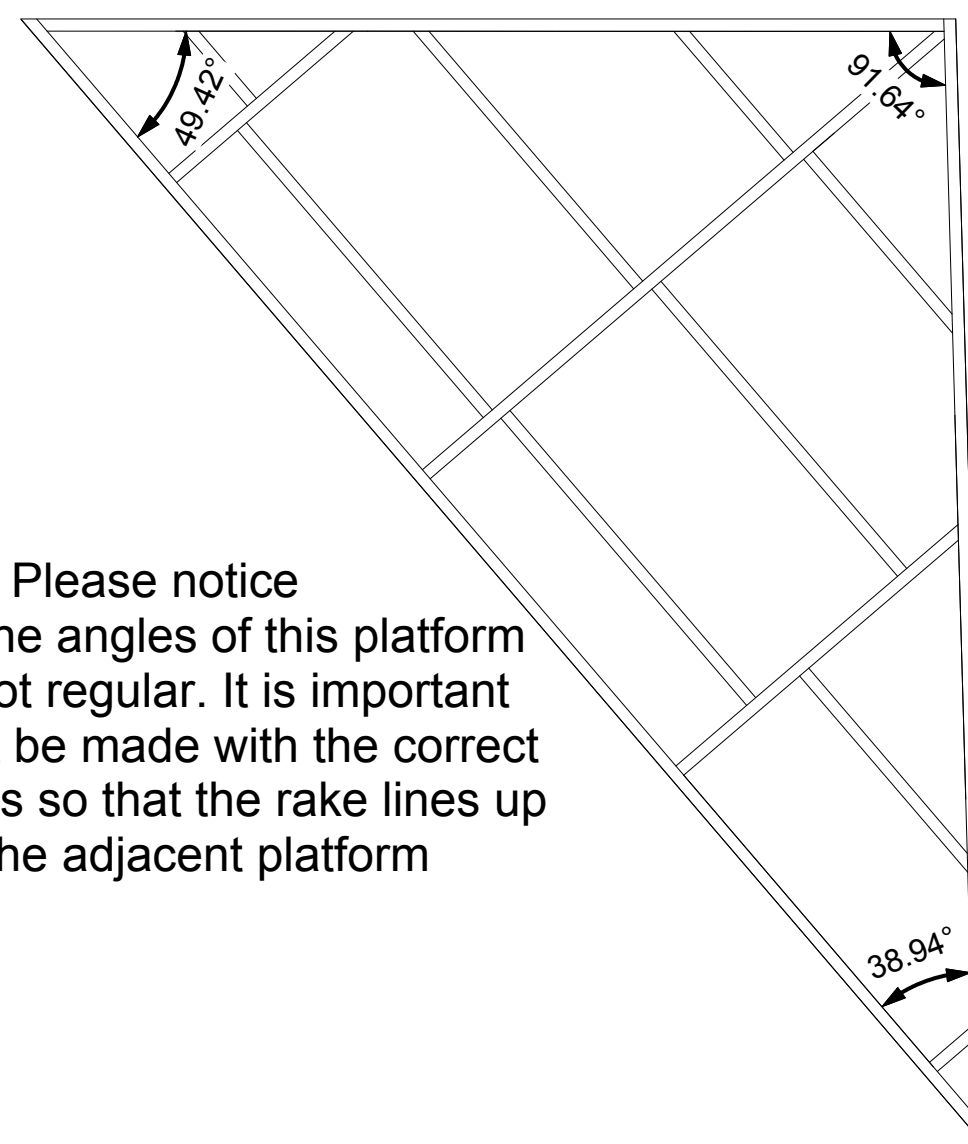


Platform B dimensions

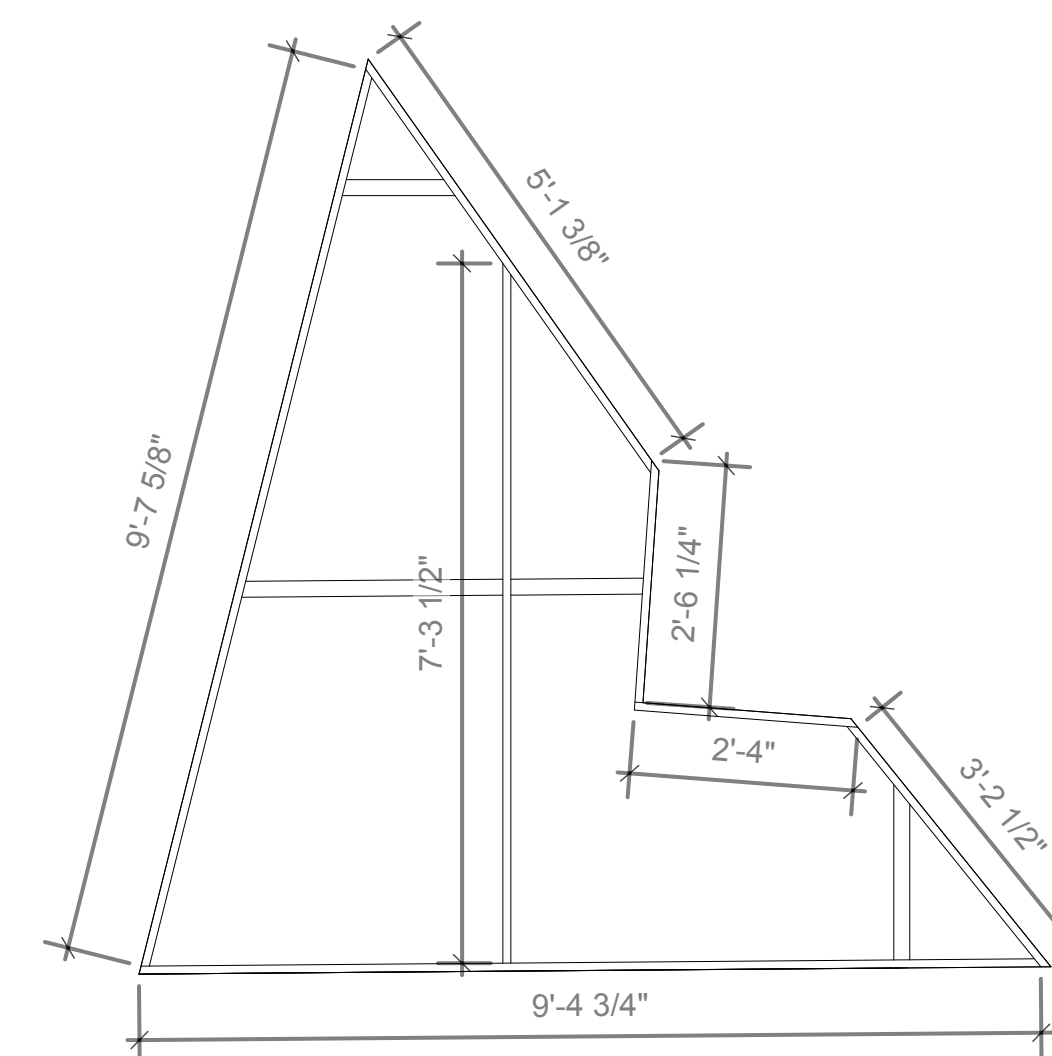


Platform B angles

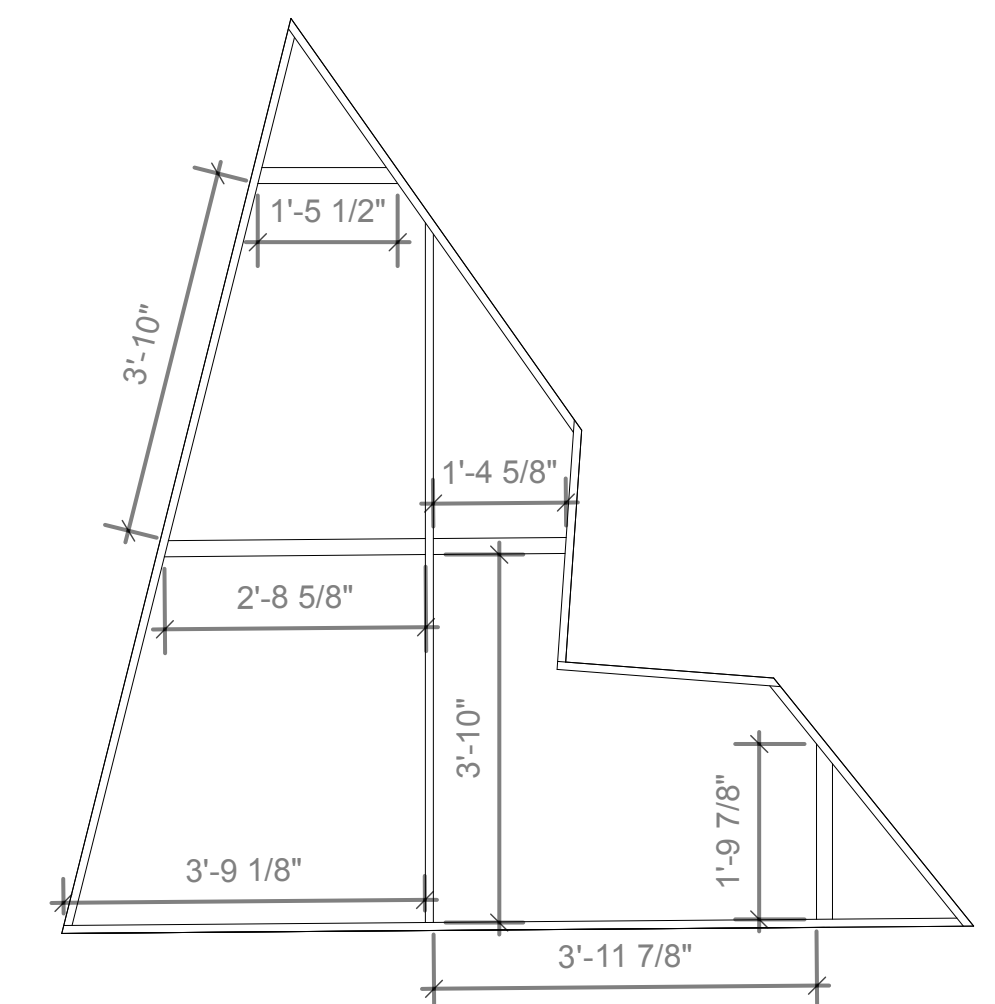


Note: Please notice that the angles of this platform are not regular. It is important that it be made with the correct angles so that the rake lines up with the adjacent platform

Platform D outer dimensions



Platform D inner dimensions



Cutlist for Platform B

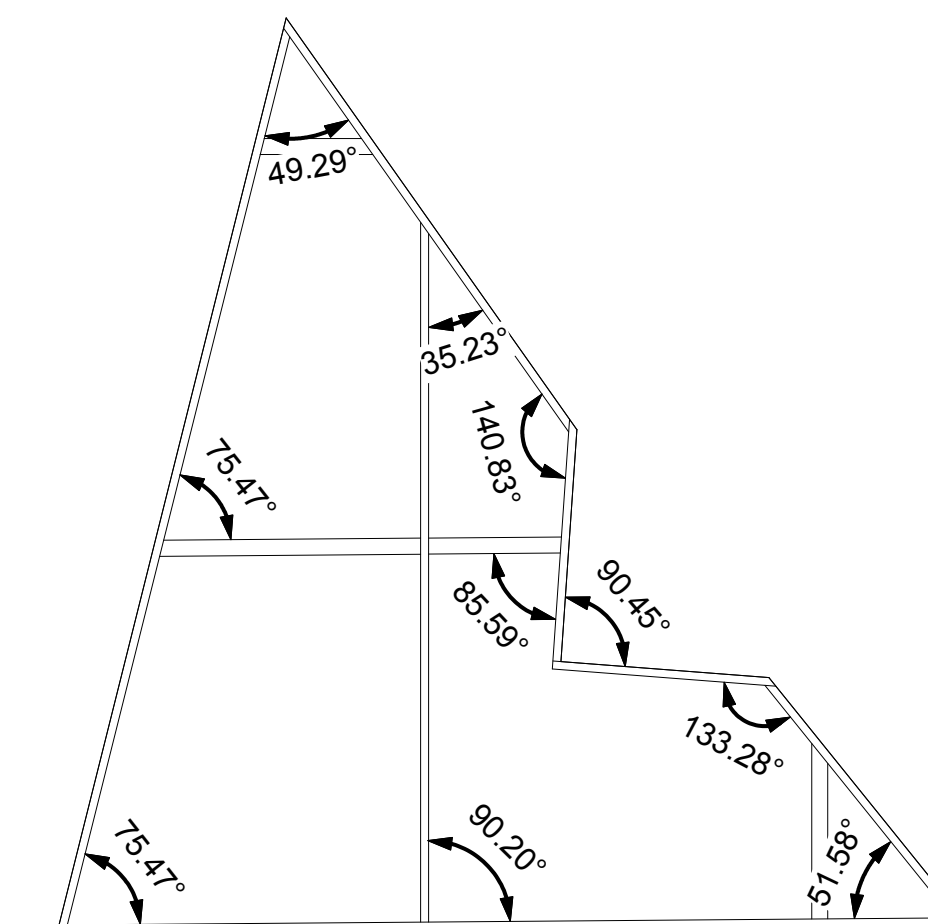
- 2x4 lumber  
 1@15'-5 7/8" LL  
 1@11'-6 7/8" L  
 1@9'-5 3/8" L  
 1@7'-1 1/8" L (notice double angle)  
 1@3'-11" L  
 1@2'-6" L  
 1@8 1/4" L

\*Toggles should be placed on staggered 2' centers

Cutlist for Platform D

- 1x1 box steel  
 1@9'-4 3/4" LL  
 1@5'-1 3/8" LS  
 1@3'-2 1/2" LS  
 1@2'-6 1/4" L  
 1@2'-4" L
- 1x2 box steel  
 1@9'-7 5/8" LL on edge  
 1@7'-3 1/2" L on edge  
 1@2'-8 5/8" L on face  
 1@1'-9 7/8" L on face  
 1@1'-5 1/2" LL on face  
 1@1'-4 5/8" L on face

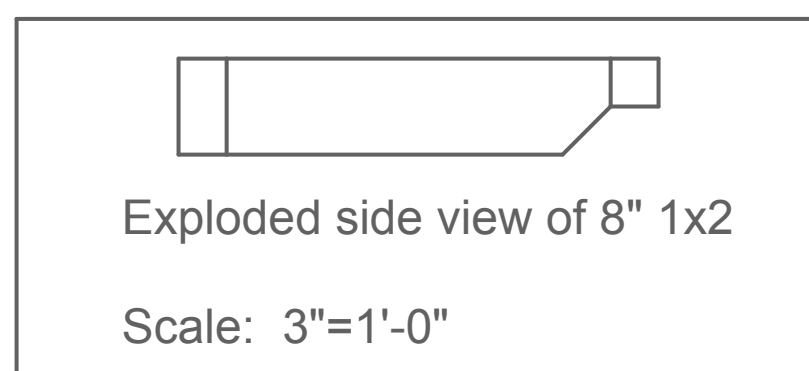
Platform D angles



Notes:

- Look at the exploded view in bottom left and do this whenever 1x2 meets up with 1x1
- Build upside down and pay special attention to what is on edge and what is on its face
- Note that Platform B is made with lumber and not steel
- Even though multiple platforms are shown, only build one of each

L = 1 angle measured on the long side  
 LL = 2 angles both measured from the long to long side  
 LS = 2 angles measured from the long to the short side



University of Virginia			
God's Ear			
Platforms B and D details			PLATE NO.
DIRECTOR: Sandi Shiner			2
DESIGNER: Tom Bloom and Jason Randolph			
TECH DIRECTOR: Lauren Shell			
DRAFTER: Lauren Shell			
APPROVED	DATE	SCALE	DWG. DATE
		1/2" = 1'-0"	12.29.2012